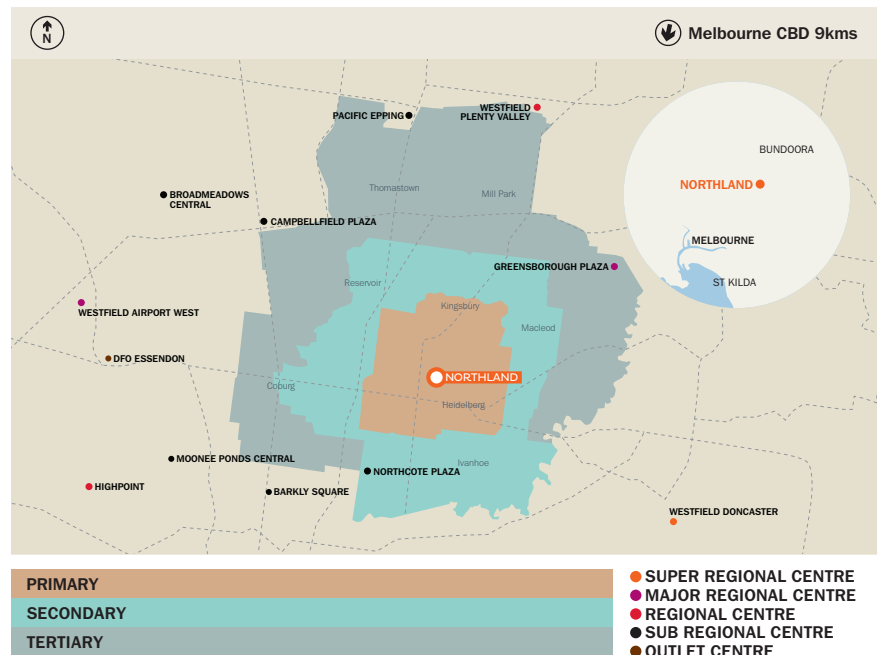


# Northland

2-50 Murray Road, East Preston VIC 3072  
 Telephone +61 3 9478 1399, Facsimile +61 3 9478 8591  
[northlandsc.com.au](http://northlandsc.com.au)

**Northland Shopping Centre** is a two level Major Regional shopping centre located approximately 9 kilometres north of the Melbourne CBD. It is anchored by Myer, Kmart, Target, Aldi, Coles, Woolworths and HOYTS Cinema and includes more than 230 specialty stores. The centre is complimented by a popular outdoor entertainment and dining precinct.



## Key statistics

**9km**

From the CBD



**568,745**

People in TTA



**234**

Specialty stores



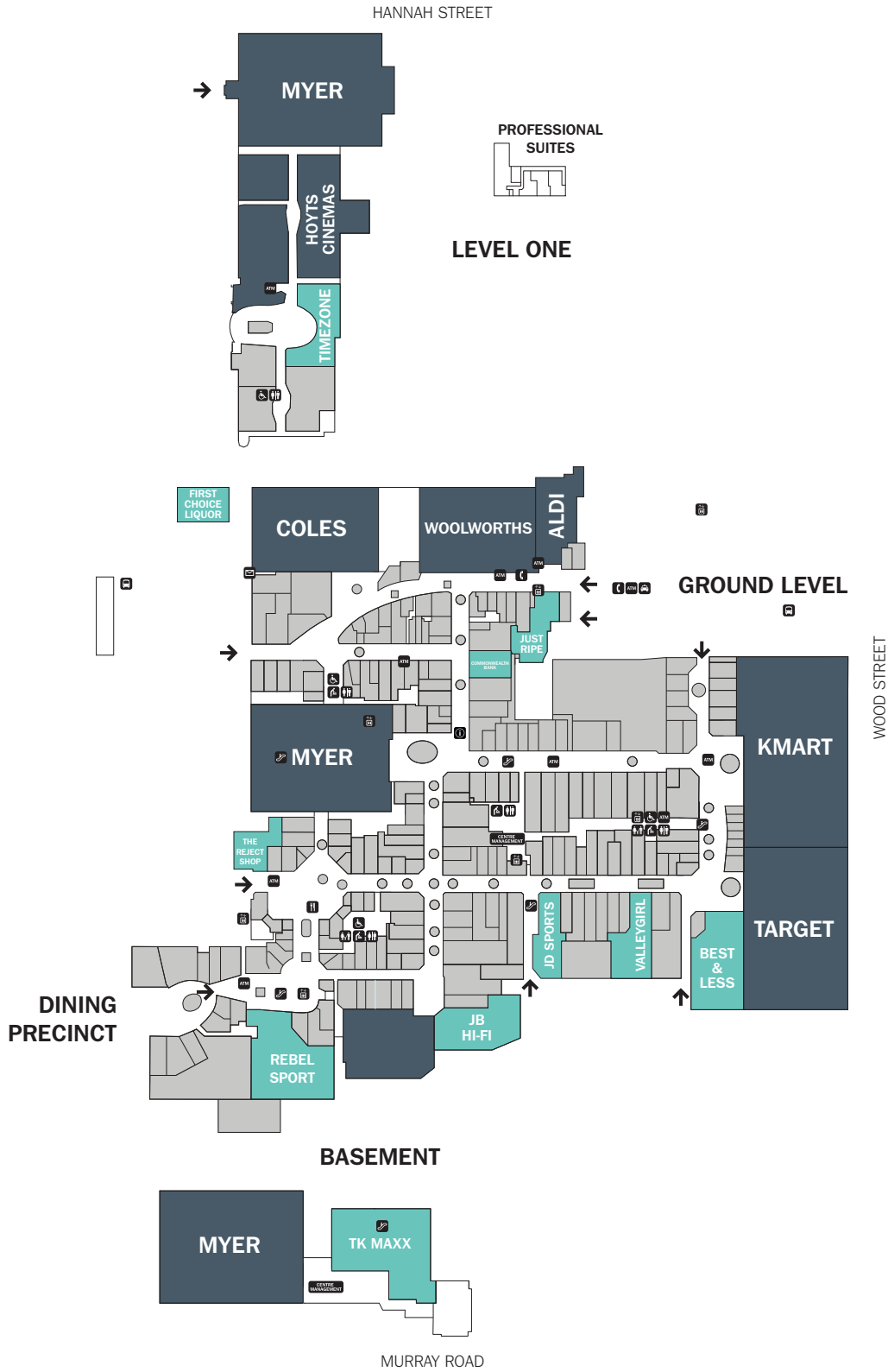
Source: Produced by Vicinity Data Science & Insights. This material is a derivative of ABS Data that can be accessed from the website of the Australian Bureau of Statistics at [www.abs.gov.au](http://www.abs.gov.au).  
 TTA: Total Trade Area

## Centre statistics

Centre type	Major Regional
Annual traffic (million)	-
Total GLA (sqm)	98,540
Total tenants	279
Majors <sup>1</sup>	Aldi, Coles, Kmart, HOYTS Cinemas, Myer, Target, Woolworths
Mini Majors <sup>2</sup>	Best & Less, Goodlife Health Clubs, JB Hi-Fi, Just Ripe, Lincraft, Rebel Sport, The Reject Shop, Timezone, Valleygirl
Number of specialty retailers <sup>3</sup>	234
Number of car spaces	4,640
Moving annual turnover (MAT) (\$m) <sup>4</sup>	543.9
MAT/sqm – Total (\$)	6,168
MAT/sqm – Specialty (\$) <sup>5</sup>	9,120

Centre statistics correct as at 30 June 2018

- 1 Classified in accordance with SCCA guidelines, typically includes supermarkets, department stores and discount department stores. Also includes Cinemas
- 2 Stores >400 sqm, by Sales Group
- 3 All sales reporting tenants under 400sqm, but excludes travel agents and lotto and free standing pads sites
- 4 Total MAT includes all reporting tenancies and is inclusive of GST, as at 30 June 2018
- 5 MAT/sqm - Based on sales and area for all reporting tenants, non-retail tenants excluded, as at 30 June 2018



Floor plan as at 30 June 2018.

**For further information please contact:**

**Vicinity Centres**

Level 4, Chadstone Tower One, 1341 Dandenong Road , Melbourne VIC 3148  
 Telephone +61 3 7001 4000, Facsimile +61 3 7001 4001

**Disclaimer**  
 Information contained in this document is based on historical data and is illustrative only. It does not provide any predictions as to future events or outcomes and does not constitute a lease offer or warranty as to the profitability, design or layout of the centre. You should carry out your own investigations and satisfy yourself in that regard and obtain independent legal, financial and business advice before making any decision or entering into any agreement or arrangement concerning the subject matter of this document or the centre. The information is provided on the clear understanding that while care has been taken in its preparation, to the extent permitted by law, all liability for omissions or errors however arising is expressly disclaimed. Vicinity Centres may amend, add or remove any information in this document at any time without further notice to you. You may not copy or use any part of this document without the express written consent of Vicinity Centres. Any monetary amounts are expressed in Australian dollars unless otherwise stated. Rates are subject to change without notification.